



RICE **GROWING** **OUTLOOK** **REPORT**

JULY 2023





Rice Growing Outlook Report

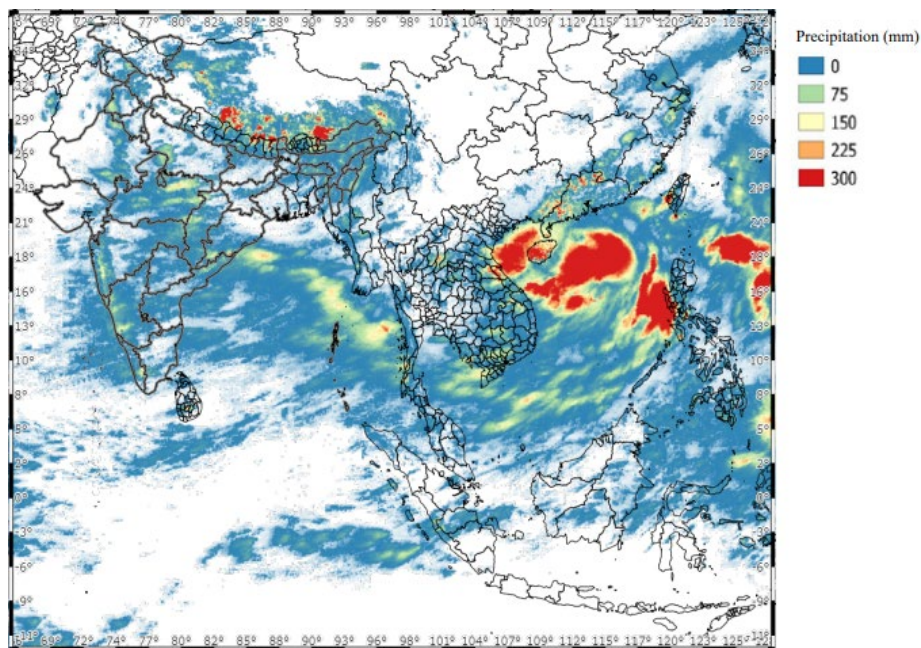
July, 2023

Overview

In the Northern side of SE-Asia, the wet season rice is in the tillering to the maturing stage. This year, the start of the rainy season is late and the planting work is likely to be delayed. The total planted area is forecast to decrease than last year due to agricultural water shortage. The growing condition of wet season rice is currently assessed to be fair, but there are concerns about the impact of delayed planting on the final yield.

In the Southern side of SE-Asia (Indonesia), the harvesting of wet season rice has been completed with 6.1 million hectares, and the yield is good due to good weather conditions through the growing season. On the other hand, the dry season rice planting is progressing and the growing condition is good due to enough irrigation water.

Precipitation condition in early July



This map is provided by Indian Space Research Organisation (ISRO) under the APRSAF/SAFE agromet project

<https://www.eorc.jaxa.jp/SAFE/project/agromet>

Cambodia

The early rice of the wet season is in the flowering to grain filling stage. The planted area reached around 2.2 million hectares or 82% of the national plan. The planting and growing conditions are generally slightly good due to enough sunshine. Some areas are still recording lower rainfall, but there are no reports of significant damage from the drought.

The yield is expected to slightly increase from last year, which was affected by the heavy rains in some areas' drought or other issues.

Indonesia

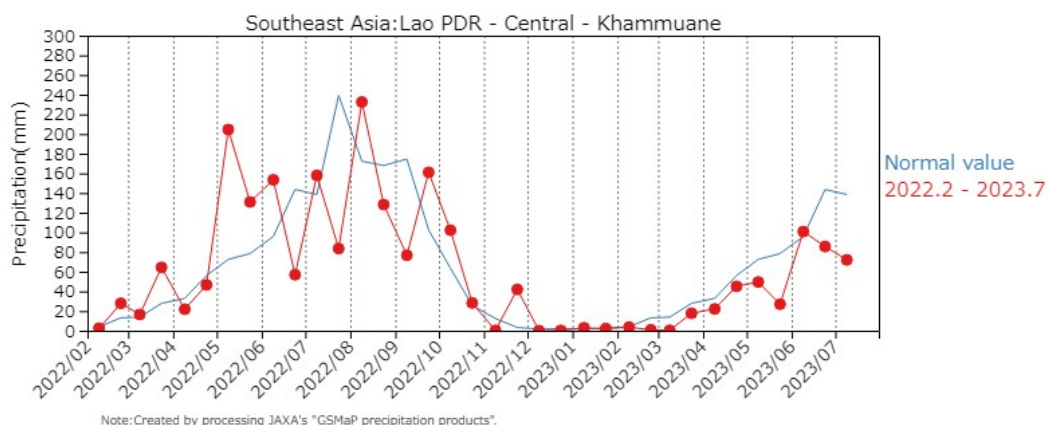
The harvested wet season rice is completed this July, with the total harvested being 6.1 million hectares and 1.1% lower than the last wet season. The yield is expected to be good due to enough irrigation water and sunlight at the flowering phase.

This July is the fourth month of planting the dry season rice, the planted area is 3.5 million hectares and 0.7% lower than last dry season. The growing condition of dry season rice is good due to enough irrigation water, especially in the northern part. Higher rainfall is still recorded in some areas but no damage has been reported.

Laos

The wet season rice of the lowland is in the seeding and tillering stage. The weather condition and irrigation water supply this month is good for the paddy field due to rainfall for all regions. The planting work until now has progressed to 70% of the national production plan. This season's planting has been significantly delayed due to the late start of the rainy season.

On the other hand, the planting of upland rice is approximately 90% of the national production plan under good conditions.



JASMAI Precipitation Graph (Khammuane): This season's planting has been significantly delayed due to the late start of the rainy season

Myanmar

Planting of the wet season rice has been done this month over 1.9 million hectares that account for 31.1% of the national plan (6.07 million hectares). The main planting area of the wet season rice is in the delta region, which occupies more than 70% of the total planted area. The planting of the wet season rice is slightly slower than last year due to less availability of rainfall/irrigation water.

This month, Myanmar is suffering irregular rainfall and rising temperatures. It may impact the planting work of the wet season rice. But the overall growing condition is quite fair, and the current planting work of the wet season rice is going well. Most of the planted wet season rice is now at tillering stage.

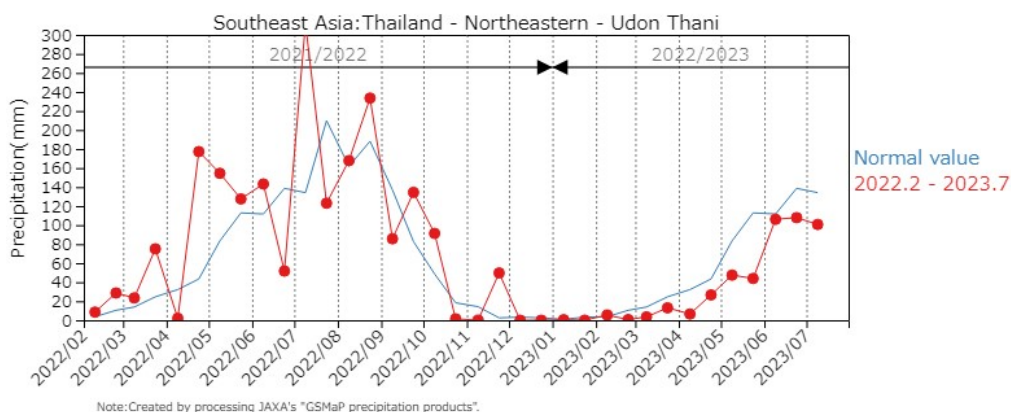
Philippines

Wet season rice planted from April to May is currently in the maturing stage. The country experienced good weather conditions during the second half of June until the first half of July. Tropical Depression “Dodong” has made landfall in the first week of July which brought significant rainfall, but no damage has been reported.

Generally, the crop growing condition of wet season rice was good for most provinces as the country is more likely to experience near to above normal rainfall conditions for the remainder of the month.

Thailand

Wet season rice is now in the tillering stage. The rice planted area has been cultivated approximately 40% of the total expected planting area which is less than last year because of less rainfall from May to June. Some areas have become abandoned and some areas have been changed to other crops such as cassava and sugarcane, which can get higher income. Paddy yield is expected to decrease due to drought and the high risk of damage from diseases and pests. As a result, total production is expected to reduce compared to last year.



JASMAI Precipitation Graph (Udon Thani): The rice planting was delayed due to less rainfall from May to June

Vietnam

In the North, the winter-spring rice (dry season rice) is completed. The yield is estimated at about 6.44 tons per hectare, 3.5% higher than last year due to favorable weather and better irrigation preparation. The wet season rice (summer-autumn rice) is in the seeding and tillering stages. The growing condition is good because of enough irrigation water.

In the South, the summer-autumn rice (wet season rice) is in young panicle forming and grain filling stages with good growing conditions. The early wet season rice of the Mekong River Delta starts to harvest with 0.2 million hectares. On the other hand, other wet season rice (autumn-winter rice) begins in this month.

*JASMAI is an open and free system

<https://jasmai.maff.go.jp/en/>